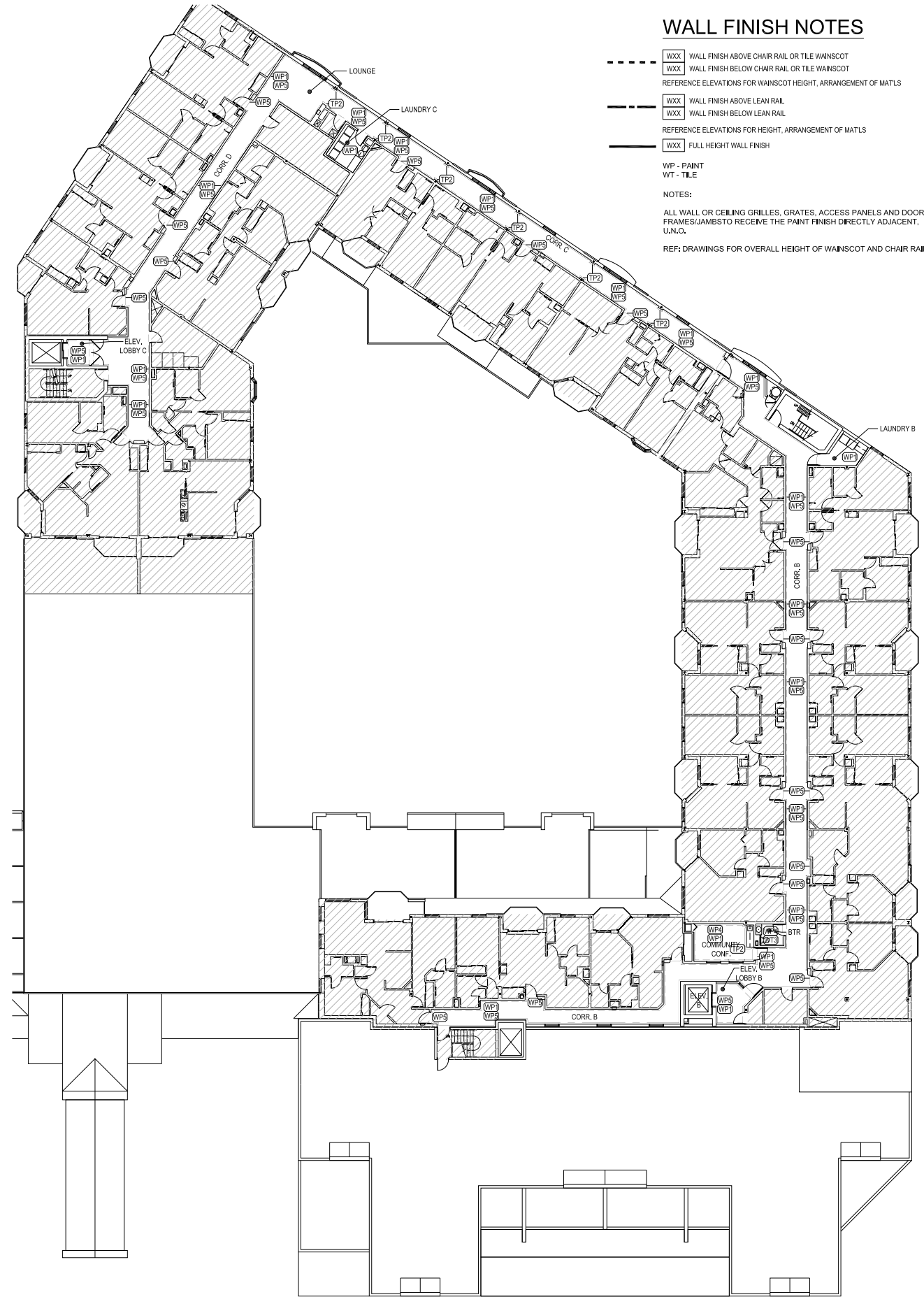


1 **LEVEL 4 - WALL FINISH PLAN**
SCALE: 1/16" = 1'-0"



2 **LEVEL 6 - WALL FINISH PLAN**
SCALE: 1/16" = 1'-0"

WALL FINISH NOTES

- WXX WALL FINISH ABOVE CHAIR RAIL OR TILE WAINSCOT
- WXX WALL FINISH BELOW CHAIR RAIL OR TILE WAINSCOT
- REFERENCE ELEVATIONS FOR WAINSCOT HEIGHT, ARRANGEMENT OF MATLS
- WXX WALL FINISH ABOVE LEAN RAIL
- WXX WALL FINISH BELOW LEAN RAIL
- REFERENCE ELEVATIONS FOR HEIGHT, ARRANGEMENT OF MATLS
- WXX FULL HEIGHT WALL FINISH

WP - PAINT

WT - TILE

NOTES:

ALL WALL OR CEILING GRILLES, GRATES, ACCESS PANELS AND DOOR FRAMES/JAMBS TO RECEIVE THE PAINT FINISH DIRECTLY ADJACENT, UNL.O.

REF: DRAWINGS FOR OVERALL HEIGHT OF WAINSCOT AND CHAIR RAIL.

COVENANT VILLAGE OF GOLDEN VALLEY

COURTYARD BLDG LEVEL 4 & LEVEL 6

FOR PRICING

**.K.I.D.
JENETTE
KINSLER
INTERIOR DESIGN**

K.I.D.
Kinsler Interior Design
5171 Lowell Blvd.
Denver, CO 80221

ph. 303-319.2525

REV # DATE TYPE

REV #	DATE	TYPE

Phase
K.I.D. Proj. No. 1501.00

DATE: 02.26.2015
SCALE: 1/16" = 1'-0"

ID1.4
LEVEL 4 & LEVEL 6
WALL FINISH PLAN

COVENANT VILLAGE OF GOLDEN VALLEY

COURTYARD BLDG MEZZANINE & LVL 3

WALL FINISH NOTES

- WXX WALL FINISH ABOVE CHAIR RAIL OR TILE WAINSCOT
 - WXX WALL FINISH BELOW CHAIR RAIL OR TILE WAINSCOT
 - REFERENCE ELEVATIONS FOR WAINSCOT HEIGHT, ARRANGEMENT OF MATLS
 - WXX WALL FINISH ABOVE LEAN RAIL
 - WXX WALL FINISH BELOW LEAN RAIL
 - REFERENCE ELEVATIONS FOR HEIGHT, ARRANGEMENT OF MATLS
 - _____ WXX FULL HEIGHT WALL FINISH
- WP - PAINT
 WT - TILE
 WV - VINYL
- NOTES:
 ALL WALL OR CEILING GRILLES, GRATES, ACCESS PANELS AND DOOR FRAMES/JAMBSTO RECEIVE THE PAINT FINISH DIRECTLY ADJACENT, U.N.O.
 REF: DRAWINGS FOR OVERALL HEIGHT OF WAINSCOT AND CHAIR RAIL.

FOR PRICING

K.I.D.
 Kinsler Interior Design
 5171 Lowell Blvd.
 Denver, CO 80221

ph. 303-319,2525

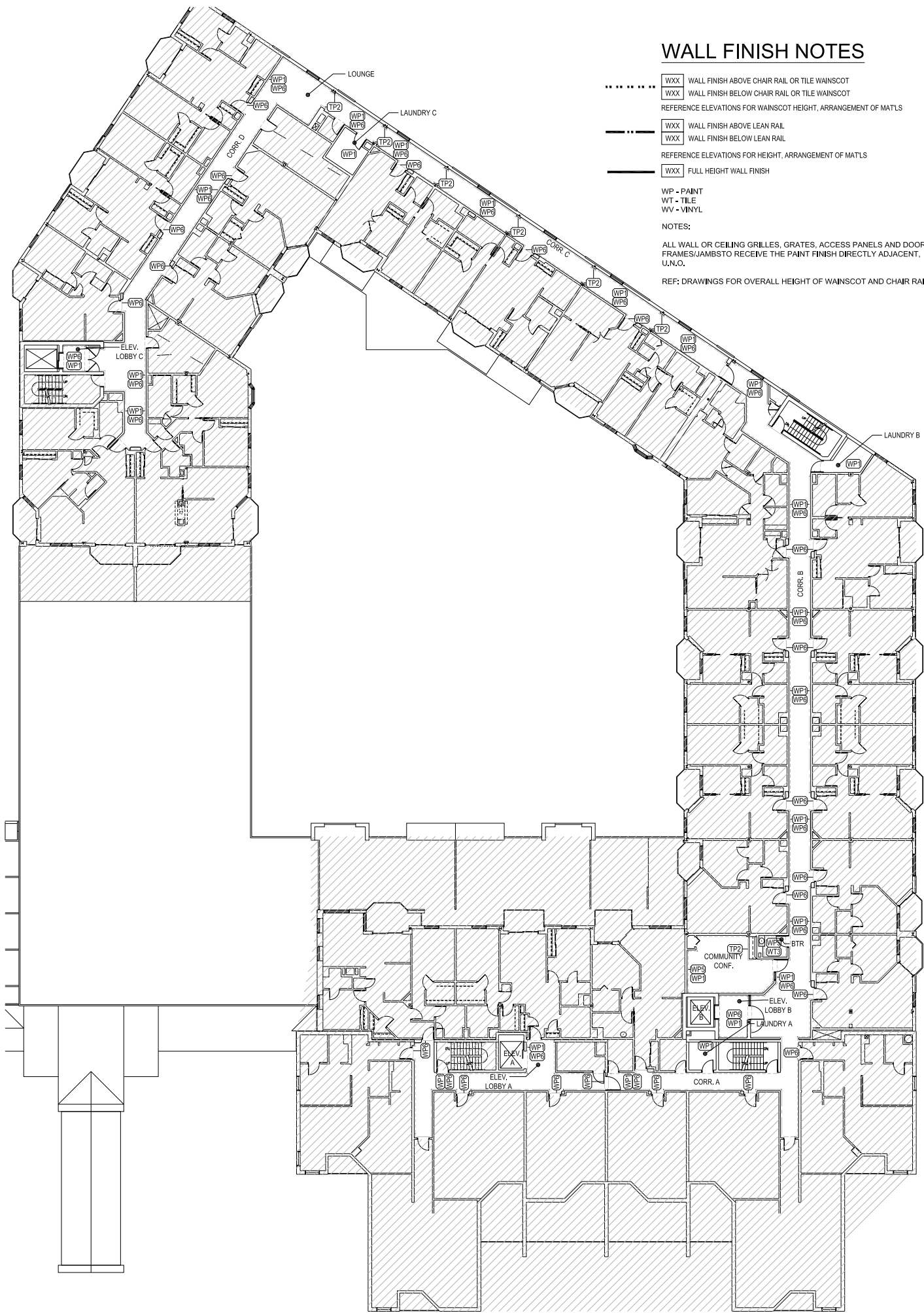
REV # DATE TYPE

REV #	DATE	TYPE

Phase
 K.I.D. Proj. No. 1405.00
 DATE: 09.03.2014
 SCALE: 1/16" = 1'-0"



1 **MEZZANINE - WALL FINISH PLAN**
 SCALE: 1/16" = 1'-0"



2 **LEVEL 3 - WALL FINISH PLAN**
 SCALE: 1/16" = 1'-0"